

Overview

- 1: Door Lever

2: Latch Assembly

3: Wood Screws

4: Mounting Screws

5: Inside Knob


6: Screw holes
- 7: Strike and Strike box

8: Outside Handle

9: Spacer

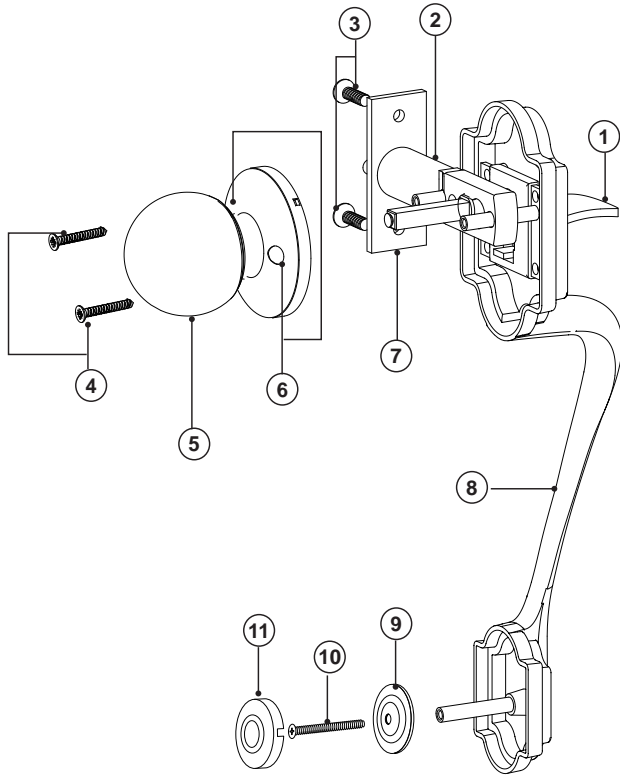
10: Inside Screw

11: Decorative cover

 Press the Opening button or turn the Inside Knob right to open the door.

Specifications

Item	Description
Model Name	TL121
Net Weight	1.79 lb
Dimensions	11.6 x 6.41 x 2.75 in
Material	Zinc alloy
Installation	Intermediate (tools not included)
Water Rating	IP65 (dust and splash proof)
Assembled Diameter	2.71 in



TURBOLOCK®
DIGITAL SMARTBOLT + DOOR HANDLESET

OVER 1 MILLION
PASSCODE
COMBINATIONS



WORKS WITH
RIGHT OR LEFT
SIDE DOORS



TURBOLOCK
QUALITY
COMMITMENT



TL114 + TL121

Protect Your Property

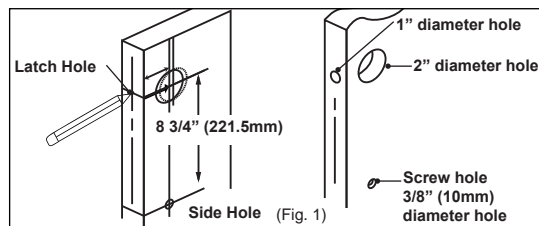
the Smart Way

In order to continue serving our customers and providing the best products, our product information including our user manuals may receive updates from time to time. Please check our website for the latest user manuals and product materials. Version 1.0 11/28/19



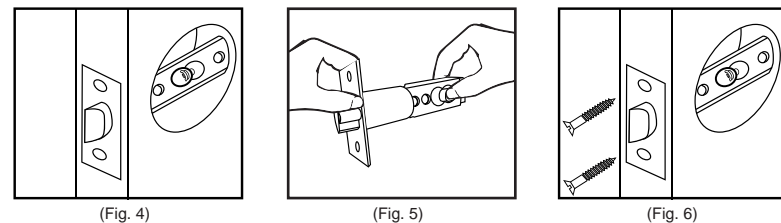
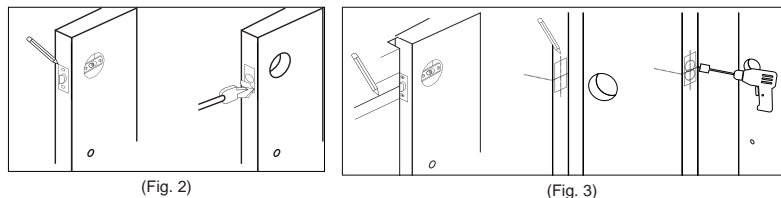
Part 1: Making the Opening

- Step 1.** Using the provided template, mark the locations for the centers of the backset, latch hole and the screw hole.
- Step 2.** Bore a 54mm (about 2" or 2 1/8") hole on door face. Then drill a 25mm (about 1") hole into the edge of the door so that it intersects with the larger hole.
- Step 3.** 8 3/4" (221.5mm) under the larger hole, drill a 3/8" (10mm) screw hole to fix the handle bottom.



Part 2: Installing the Latch

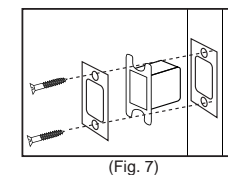
- Step 1.** Insert the latch into the hole. Using a pencil, mark a line around edge of latch plate to use as a guide. After marking at all four sides of the plate, remove the latch. (Fig. 2)
- Step 2.** Chisel about 3mm (0.1") deep or until latch plate sits flush with door edge. (Fig. 3)
- Step 3.** Insert the latch into the hole and check it. The latch's plate should sit flush against the edge of the door. (Fig. 3) If there's too much space behind the latch or if it's sticking out of the door the latch should be adjusted. If the latch needs adjusted, move to Step 4; otherwise, skip to Step 5.
- Step 4.** Hold the front of the latch and the square opening from both sides, pull or push to extend or retract the latch end as needed. (Fig. 5) Insert the latch back into the door.
- Step 5.** Check the latch's bolt and make sure the rounded side faces in. Use the 2x wood screws and a screwdriver (not included) to secure them. (Fig. 6)



Part 3: Creating a Mortise & Installing the Strike

- Step 1.** Push the door until nearly closed and check where the latch's bolt touches the frame.

- Step 2.** Use a pencil to mark the horizontal center of the latch on the door frame. (Fig. 2)
- Step 3.** Open the door again and extend the line over the edge of the door and inside the frame.
- Step 4.** Measure the inside of the frame. Determine and mark the halfway point. From this point, use a ruler to draw a line straight down so that it intersects the existing line. (Fig. 3)
- Step 5.** Use a 7/8" (22.2mm) spade bit and a drill to make two partially overlapping holes about 0.6" (15mm) deep centered both above and below the center line. If needed, use the chisel to make the hollow (aka "mortise") more square. If you choose to use the strike box, you may need to chisel slightly deeper. (Fig. 3)
- Step 6.** Hold the strike plate over the mortise. Using a pencil, mark a line around the edges of plate to use as a guide. After marking at the straight edges of the plate, remove the plate.
- Step 7.** Chisel about 1.5mm deep or until strike plate sits flush with door frame. If you choose to use the strike box, you may need to chisel slightly deeper.
- Step 8.** Position the strike and strike box, then use a pencil to mark the center points of the screw openings in the strike plate. Set the strike and strike box aside and drill two small holes at each center point.
- Step 9.** Position the strike and strike box. Add the two remaining wood screws and use a screwdriver (not included) to secure them.



Part 4: Main Installation

- Step 1.** Start with the outside handle. Feed latch pin through the square hole in the latch and thread the two pegs through the smaller, round holes. If needed, have someone hold the door itself or hold the outside handle flat against the front of the door. And feed the screw holder at the bottom of the handle into the screw hole. (Fig. 8)
- Step 2.** Align the inside knob on the back of the door to and use the 2x mounting screws to fasten the it to the door. Make sure both screws are tightened. (Fig. 8)
- Step 3.** Slide the spacer into the screw holder, then tighten the inside screw into the screw holder, after that, cover the decorative cover. (Fig. 8)
- Step 4.** The lock should now be ready to use. Press the outside **door lever** or turn the **inside knob** right to open the lock.

